

COVID-19 Education Continuity Newsletter



Department for Children, Adults and Health
Education, Learning and Skills

Issue 20: 16th July 2020

Public Health England now has updated the guidance on COVID-19 for educational settings [here](#) Keep checking daily.

#SouthGlosConnect...Reconnecting, resilience and recovery in our school communities

#Southglosconnect is the official title for our South Gloucestershire community based approach to 'Recovery' from the COVID pandemic in our schools and settings. The approach centres on maintained schools, Multi-Academy Trusts, settings and services working together in partnership to create resources and guidance that will be of practical use to our children and young people, teaching and non-teaching staff, parents and/carers, governors and the wider community. This project has been seen as 'trailblazing' as we are the first LA in the country to spearhead the recovery curriculum. The Evening Post article can be found [here](#).

As you will be aware from previous newsletters, the approach is based on the principles of Professor Barry Carpenter's 'Recovery Curriculum' and is now being implemented with facilitation from Sharon Gray OBE. The aim is that anyone working in a school or setting in South Gloucestershire can have easy access to materials to support their work.


The resources and guidance are grouped under different headings that refer to the groups that have been put in place to practically support #SouthGlosConnect. We now have a website [here](#) that will be home to all the resources and guidance that the working groups will be developing. The teams have put some content onto the website already and there will be more to come over the summer and into term 1. **We have produced a set of slides attached to this newsletter that schools can use for a short staff briefing as an inset or staff meeting – please visit the [website](#) to download.**

Use three words to describe this collaborative project to a colleague



The website has the following:

- Strategic Oversight - this will include links to our newsletters and updates
- Stress, trauma, loss and bereavement (SEMH) – information and guidance
- Valuing the unique learner (SEND, EAL, PP, GRT, more able, the tutored child) – guidance and materials to support different groups
- The curriculum – resources to support a 'Recovery' approach
- Stakeholders – information to support Parents/carers, governors/trustees, staff/Headteacher
- Special schools and settings – specific resources, advice and guidance for special schools and resource bases

HM Government 

DEPARTMENT FOR EDUCATION CORONAVIRUS HELPLINE
for education and children's social care related queries: anyone working in
early years through to universities, plus parents
0800 046 8687
8am to 6pm (Monday to Friday) 10am to 4pm (Saturday and Sunday)
DfE.coronavirushelpline@education.gov.uk

SEND Inspection Revisit APP

Everyone will be aware that we had the revisit of our Ofsted /CQC Inspection in February and that the outcome was that although we had made good progress on 6 out of 8 areas of weakness, there was insufficient evidence to demonstrate sufficient progress in relation to Education Outcomes and Quality of EHC Plans. This means that we are required to publish an Accelerated Progress Plan to show how we will address the issues identified to make sufficient progress and deliver the necessary improvements over the next 12 months. Following meetings with DfE and NHS England over the last two weeks and agreement by the SEND Partnership Board this week, the APP was published yesterday on the Local Offer Website. Please take time to consider the plan as we will not be able to achieve what we need to without collective ownership across the Local area to ensure our arrangements for children and young people with special Educational Needs are as good as they should be. It is worth me saying that the plan captures those elements of the strategy that we have been working on together – SEND Cluster; South Glos way Toolkit; Quality Assurance Framework and the contents of the plan will not come as a surprise. I would like to take this opportunity to express enormous gratitude to everyone involved in the development and delivery of the strategy over the last twelve months and those colleagues who were involved in the Revisit. The DfE said that we all deserved an enormous part on the back for turning 6 out of 8 weaknesses around.

Thank you from Hilary Smith

I would like to take the opportunity of this last newsletter of the academic year to express enormous thank you to everyone across the system for how you have worked so collaboratively with the LA in responding to the Covid Crisis. I could never have imagined 12 months ago that my first full academic year in South Glos would have been anything like this. It has been a huge challenge for all of us and of a scale that we have never experienced before. However, I also feel that we have been incredibly well connected. I hope you agree that it has felt like everyone across South Glos being willing to work through the challenges together so that we are supporting each other in navigating a way through. I am immensely proud to work for South Glos and I am also extremely proud of my fantastic team.

I will be sorry to say goodbye to Faye, Guy and Gary who are leaving us this summer and wish them well with their new adventures. I also look forward to welcoming new team members as we go forward with recruitment over the coming weeks/months, I will be involving some of you in that process. So finally thank you everyone for the last 12 months, for your support and commitment to providing great education to our communities. I hope you all have a wonderful summer break and I look forward to seeing you again in September. Hilary

Thank you and farewell from Faye

Whilst this year has brought some of the biggest challenges for us all, what I have reflected on, is that this phase has also brought us all together as system leaders, working more collaboratively than we have ever worked before. I started my career in South Glos in 2001. I am so grateful to have worked with many of you as a Headteacher and as strategic lead for the LA. As I leave my post on 14th August, I would like to wish you all a wonderful summer and a well deserved rest! I will be keeping in touch with colleagues in South Glos and hoping to continue collaborations in the future.

Frontline NHS, care, social care and emergency service holiday offer: **CHANGE OF VENUE**

As shared previously, the Local Authority with Progressive Sports and Olympus Academy Trust have put together a front line key worker offer that will operate throughout the summer holiday period. Please note that there has been a change of venue and that the provision will now take place at **Abbeywood Secondary School**. To help us, if you know that you are signposting parents and/carers to the offer or have already done so, please can you make them aware of the venue change, as this will help the provider. Many thanks.

Summer learning

As a Local Authority, as part of our wider work around the recovery of our children and young people, we wanted to provide an offer to some of our disadvantaged pupils in the last week of the Summer holiday; the week beginning the 24th August. We are pleased to be able to provide a fully funded offer for both **Music and PE** for selected pupils in current **Years 3-6**.

We see this as a really good, unique and free opportunity, with places available to every Primary and Junior School within South Gloucestershire. We are working with two providers, both of whom have staff that have current DBS and who will be trained in the latest Public Health guidance. We have tried to keep this as simple as possible for schools in terms of booking and access.

The two offers

- The sports offer will be operated through **'Progressive Sports'** who have a track record of supporting us in holiday provision. The sports offer will be for a **single day** per pupil (number of pupils varies per school) at **one of two locations** in South Gloucestershire.
- The music offer will be delivered by **'Integra Music Service'** who have a proven record of high quality music service provision. The music offer will be for one child to access **three half-days (Monday, Tuesday and Wednesday)** and another child to access **two half-days (Thursday and Friday)** at one of **three locations** in South Gloucestershire.

Our locations

- Sport will take place at: **Parkwall Primary School** and **Bowland Green Primary School**
- Music will take place at: **Winterbourne Academy, Bowland Green** and **St Stephen's Junior School**

What do we need to do next?

You will have received an **email last week** with details of what to do next including the number of places you have been allocated alongside joining instructions for parents and/carers. We see this as a good opportunity to engage many of our children and young people and hope as many as possible will take up the offer.

Risk Assessment Guidance

You will see from one of the attachments that Health and Safety have produced updated guidance to support Risk Assessments.

EYFS guidance on sand, water and playdough

The Early Years team have put further advice and guidance on the use of sand, water and playdough in EYFS settings on the virtual learning environment. Please visit the VLE to find out more.



Library Service: Silly Squad, Summer Reading Challenge 2020

The Summer Reading Challenge feels needed now more than ever. Taking part in the Challenge helps children to become more independent readers and improves their confidence in reading. It also supports mental wellbeing, boosting children's confidence and self-esteem, more important than ever during this time.

Therefore, South Gloucestershire Libraries are offering children and families two different ways to do the Challenge this year to comply with social distancing measures.

Children can do the Digital Summer Reading Challenge at www.sillysquad.org.uk supported by e-lending platforms.

Additionally, from 25 July, parents & carers can get a free Summer Reading Challenge Bag from their library to do the Challenge at home. See www.southglos.gov.uk/summerreadingchallenge for details.

Resources for schools to support children and families:

- School Newsletter Article (see attached)
- School/class assembly ppt (see attached)

Please encourage your pupils to do the Summer Reading Challenge to see the difference it makes to their reading.



SEND Update: Autism and COVID-19

Daniel John, Assistant Participation Officer in the council's Partnerships and Commissioning team, has recorded a video message in which he talks about the challenges that people with Autism have with all the changes that lockdown has brought.

Daniel gives some excellent advice on how we can all help people who may be finding the changes difficult. It has been shared with our 0-25 SEND teams and our partners.

We would encourage everyone to watch it for practical tips and thought-provoking awareness-raising

The video link has been added as a [SEND update news item](#) to the [local offer](#) today.



Maths planning resources to support schools to use the new non-statutory guidance for primary mathematics

As many of you will be aware the DfE published some new non-statutory guidance for teaching primary mathematics on 6 July 2020.

<https://www.gov.uk/government/publications/teaching-mathematics-in-primary-schools>

In addition to the guidance there is short video clip that can be found via the following link.

<https://www.youtube.com/watch?v=G4-9bMsuz88&list=PL6gGtLyXoeg-FMWk00A1ciPo3fhGmi03D>

The aims of this guidance are to:

- bring greater coherence to the national curriculum by exposing core concepts in the national curriculum and demonstrating progression from year 1 to year 6
- summarise the most important knowledge and understanding within each year group and important connections between these mathematical topics

This new guidance is there to support the national curriculum and not to replace it, teachers need to be aware that not all the curriculum is covered within it.

In order to support teachers with using this new guidance effectively alongside the national curriculum once we have moved back into more formal lessons, we have written some maths planning mats. When creating the planning mats we have taken into account the DfE guidance of 'teaching an ambitious and broad curriculum in all subjects from the start of the autumn term but make use of existing flexibilities to create time to cover the most important missed context.'

For each year group 1 to 6 there are two maths planning mats, one for place value and one for addition and subtraction.

Each planning mat contains the same key information:

- Previous end of year expectations
- The conceptual prerequisites for that strand from the previous year taken from the new guidance
- A suggested teaching sequencing linked to the prerequisites and the new year group, this can link to any resource that schools are already using such as White Rose, AET, Focus maths
- A suggestion of the length of block of lessons
- Notes on misconceptions that teachers need to be aware of
- Suggestions for manipulatives
- Links to the wider curriculum
- Suggestions on how parents can support the maths at home

Below is an example of the Year 2 mat for place value.

Strand	Y1 NC end of year	Ready to progress (Full document) Prerequisites	Y2 interim Maths Planning	Y2 interim prerequisites manipulatives	Y2 interim manipulatives	Y2 interim manipulatives	Y2 interim manipulatives	Y2 interim manipulatives
APV	Count to and across 100, forwards and backwards in 1s or from any given number. Count, read and write numbers to 100 in numerals, and in multiples of ten. Read and write numbers to 100 in words. Order a number of objects and represent numbers using objects and pictorial representations including the number line, and use the language of equal to, less than, more than, less than (equal), more than, less than (equal), more than, less than (equal).	Page 48 of full document. Y1 prerequisites Know that 10 ones are equivalent to 1 ten. Know that multiples of 10 are made up from a number of tens, for example, 50 is 5 tens. Place the numbers 1 to 9 on a 100 square, but unlabelled. Estimate the position of the numbers 1 to 9 on an unlabelled 0 to 100 number line. Count forwards and backwards to and from 100.	Y2 interim Maths Planning	Y2 interim prerequisites manipulatives	Y2 interim manipulatives	Y2 interim manipulatives	Y2 interim manipulatives	Y2 interim manipulatives

Online twilights Term 1 to support implementation in the classroom

In order to support schools further the Integra maths team will be running a series of online twilight briefings in term 1.

There will be one session for maths leaders and senior leaders and one for each year group for teachers.

The aims of the sessions will be to:

- Support teachers/senior leaders with a full understanding of the new guidance and how this fits with the national curriculum
- Consider how to plan a series of lessons and use the new guidance within lessons
- How to use the new guidance to support intervention and catch up
- Look at other resources to support pupils
- Explore how the new guidance can be used to assess gaps in learning

Full details of these will be published on CPD online by the end of summer term.

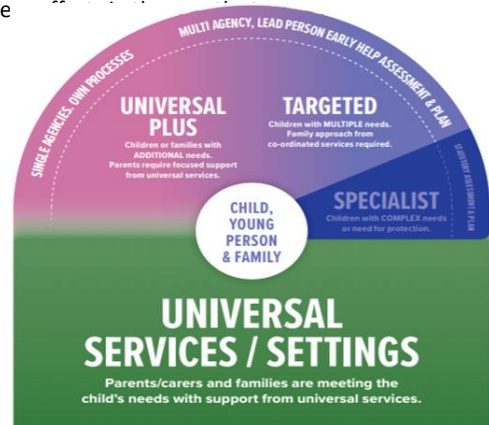
Early Help Update - Newsletter

The attached Early Help newsletter is the first of what will be regular updates for schools on the early help partnership arrangements. This update includes relevant changes to the council's preventative services including information about how to get advice and support for children and young people who you may be worried about.

The pandemic has required us all to find new and innovative ways of working together for the benefit of children and families, potentially providing us with partnership opportunities we can build on in the months and years ahead.

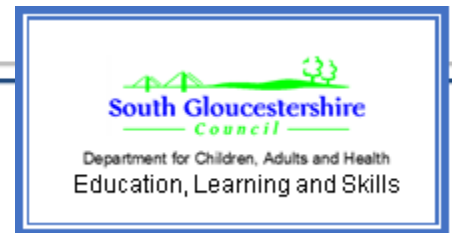
With other council teams and partner agencies, we are planning for a likely rise in the number of families who may need additional support due to the impact of the pandemic. You will no doubt have this on your radar too and be expecting more families to come to your attention because of the economic and emotional repercussions of Covi-19 such as bereavement and trauma, strained family relationships and disrupted education.

We are very aware of the incredible efforts that school leaders and staff have been making to support vulnerable students in the recent months and the efforts now being made to prepare for the return of all students in September. We are looking forward to understanding more about your plans and working alongside you in the



Equality Impact Assessment and Analysis (EqIAA)

There have been a number of updates to government guidance as you will be aware and you will know that the Shielding guidance will change as of the 1st August. In response to this, we are currently reviewing the EQIAA Risk Assessment and will provide a revised template from early August.



DfE Attendance and Behaviour Checklist

The Department for Education has today published a [behaviour and attendance checklist](#) for school leaders to support full opening from the autumn term.

As set out in the [full opening guidance](#) for schools, the DfE are asking schools to work with families and local authorities to secure regular school attendance and to evaluate their behaviour policies and practices ahead of welcoming all pupils back this autumn. The checklist is a tool for mainstream schools to support this re-engagement of pupils and the return to orderly and calm environments in which all pupils can achieve and thrive. School leaders will be best placed to use the checklist to develop their own plans, in a way that works for their pupils' needs and school context.

Integra Catering Update – September 2020

Following the publication of government guidelines for reopening schools in September. We have put together a schools meals support package that will help with your planning, for those schools who subscribe to Integra catering service.

We understand that the 'one-size-fits-all' cannot always work so we have put together 3 different lunch menus which I have attached, but we are happy to amend our offer to ensure the service works for you. The three menu lunch time offers are:

1. Sandwiches - this will include a sandwich/baguette veg sticks, cake, along with a piece of fresh fruit. The sandwich can be substituted with pizza or sausage roll etc. on some of the days
2. Hot pre lock down menu - removing any areas that can cause cross contamination, like salad bars
3. Reduced hot food offer - including jacket potatoes, fish fingers and burgers etc.

Our priority, apart from ensuring the children get a meal, is to reduce any areas of cross contamination, so we have looked at various service options that can be offered:

1. Counter service – all though this may extend the lunch time period due to government social distancing and the classroom bubbles. This option may also incur additional costs
2. Bagged – Sandwich and reduced menu offer
3. Take Away - Hot food served in disposable containers

Services 2 and 3 can be collected or delivered from the kitchen. When the lunch is over all packaging/containers can be thrown away with no further contact.

We can discuss breakfast and tuck offer at local level dependent on your school requirements and service safety. Integra will take all the necessary steps to ensure a safe foodservice environment and will continue to monitor Government COVID-19 guidance to ensure our measures are in line. We will continue to regularly review on going safety practices and menus to reflect any changes on site and government guidelines by being flexible with different food offers to suit the school and changing situations.

Integra already follow best-practice and we have already put additional measures in place to help us effectively manage the outbreaks of COVID-19 but from September we will add to those measures by the wearing of face masks and/or visors during service.

Teaching and Non-teaching staff COVID briefing

On Tuesday 14th July, PHE and ELS combined to provide an information session for education staff with the aim of providing a basic Public Health update, links to resources and in explaining some scenarios. We have provided the slides from this session for your staff alongside this newsletter; you may find it useful to share these with them.

Supply Agency PHE Guidance Training

As a Local Authority we have been keen to get the basic Public Health messages across to as wide an audience as possible in support of the working you are doing as school leaders. If you have supply agencies that you regularly use as a school, we intend to put on a webinar at the end of August that will operate in a similar way to the sessions we have held for Heads, staff, governors, settings, childminders and summer holiday providers. We don't hold a list of the supply agencies you use; so if **you use a regular agency, please can you email** Andrew Best Andrew.Best@southglos.gov.uk directly with the agency name and email contact details and we will then get in touch with them and provide some training and guidance.

Newsletter Communications from September

In the new academic year, we will be renaming this newsletter #SouthGlosConnect, and it will be issued fortnightly every Thursday. The aim will be to share with you, developments of the collaborative project and bring you news of each of the cells' work.

On alternate Thursdays, the Headteachers Need to Know e-bulletin will continue.

We would like to thank you for your positive feedback regarding the communication and support you have received during the pandemic. It has been a privilege to work in partnership with you. This phase has tested us all and has needed a fast paced and response leadership approach, which you have all risen to superbly.

As the end of term 6 approaches, we would like to wish you all a wonderful and restful summer.

Faye Bertham and Andrew Best
Strategic Leads, Education Learning and Skills Team